



GABLE LENGTH CHART

Aproximate Feet	Inches	Millimeters
1' Gable	12.087	307
	13.346	339
	14.606	371
	15.866	403
	17.126	435
	18.386	467
	19.646	499
	20.906	531
	22.165	563
2' Gable	23.425	595
	24.685	627
	25.945	659
	27.205	691
Desk Gable Sm Kick	28.465	723
Desk Gable Md Kick	29.724	755
	30.984	787
Upper 8' Ceiling	32.244	819
	33.504	851
	34.764	883
3' Gable	36.024	915
	37.283	947
	38.543	979
4 Dwr Dresser Md Kick	39.803	1011
	41.063	1043
4 Dwr Dresser Lg Kick	42.323	1075
	43.583	1107
	44.843	1139
	46.102	1171
4' Gable	47.362	1203
	48.622	1235
	49.882	1267
	51.142	1299
	52.402	1331
	53.661	1363
	54.921	1395
	56.181	1427
	57.441	1459
	58.701	1491
5' Gable	59.961	1523
	61.220	1555
	62.480	1587

Approx Feet	Inches	Millimeters
	63.740	1619
	65.000	1651
	66.260	1683
	67.520	1715
	68.780	1747
	70.039	1779
6' Gable	71.299	1811
	72.559	1843
	73.819	1875
	75.079	1907
	76.339	1939
	77.598	1971
	78.858	2003
	80.118	2035
	81.378	2067
	82.638	2099
7' Gable	83.898	2131
	85.157	2163
Regular Units	86.417	2195
	87.677	2227
	88.937	2259
	90.197	2291
	91.457	2323
	92.717	2355
	93.976	2387
8' Gable	95.236	2419

# of Holes (holes for kick/F shelf)	Inches (Millimeters)	Susp. Bracket Holes
1 Hole	0.75 (19)	No
1 Hole	1 (25.4)	Yes
2 Holes (XS)	2.008 (51)	Yes
3 Holes (S)	3.268 (83)	Yes
4 Holes (M)	4.528 (115)	Yes
5 Holes (L)	5.787 (147)	Yes
6 Holes (XL)	7.047 (179)	Yes
7 Holes	8.307 (211)	Yes
8 Holes	9.567 (243)	Yes
9 Holes	10.827 (275)	Yes



DOOR HEIGHT CHART

	Inches	Millimeters
2 HINGE DOORS	12.480	317
	13.740	349
	15.000	381
	16.260	413
	17.520	445
	18.780	477
	20.039	509
	21.299	541
	22.559	573
	23.819	605
	25.079	637
	26.339	669
	27.598	701
	28.858	733
	30.118	765
	31.378	797
	32.638	829
33.898	861	
35.157	893	
3 HINGE DOORS	36.417	925
	37.677	957
	38.937	989
	40.197	1021
	41.457	1053
	42.717	1085
	43.976	1117
	45.236	1149
	46.496	1181
	47.756	1213
	49.016	1245
	50.276	1277
	51.535	1309
	52.795	1341
	54.055	1373
55.315	1405	

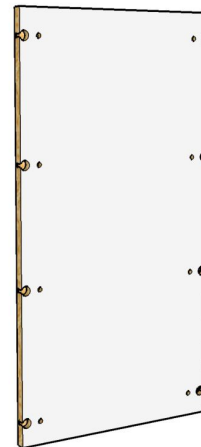
	Inches	Millimeters
4 HINGE DOORS	56.575	1437
	57.835	1469
	59.094	1501
	60.354	1533
	61.614	1565
	62.874	1597
	64.134	1629
	65.394	1661
	66.654	1693
	67.913	1725
	69.173	1757
	70.433	1789
	71.693	1821
	72.953	1853
	74.213	1885
	75.472	1917
	76.732	1949
5 HINGE DOORS	77.992	1981
	79.252	2013
	80.512	2045
	81.772	2077
	83.031	2109
	84.291	2141
	85.551	2173
	86.811	2205
	88.071	2237
	89.331	2269
	90.591	2301
	91.850	2333
	93.110	2365
	94.370	2397
	95.630	2429



BACKER LENGTH CHART

Approx Feet	Inches	Millimeters
1' Gable	10.591	269
	11.850	301
	13.110	333
	14.370	365
	15.630	397
	16.890	429
	18.150	461
	19.409	493
	20.669	525
2' Gable	21.929	557
	23.189	589
	24.449	621
	25.709	653
Desk Gable Sm Kick	26.969	685
Desk Gable Md Kick	28.228	717
	29.488	749
Upper 8' Ceiling	30.748	781
	32.008	813
	33.268	845
3' Gable	34.528	877
	35.787	909
	37.047	941
4 Dwr Dresser Md Kick	38.307	973
	39.567	1005
4 Dwr Dresser Lg Kick	40.827	1037
	42.087	1069
	43.346	1101
	44.606	1133
4' Gable	45.866	1165
	47.126	1197
	48.386	1229
	49.646	1261
	50.906	1293
	52.165	1325
	53.425	1357
	54.685	1389
	55.945	1421
	57.205	1453
5' Gable	58.465	1485
	59.724	1517
	60.984	1549

Approx Feet	Inches	Millimeters
	62.244	1581
	63.504	1613
	64.764	1645
	66.024	1677
	67.283	1709
	68.543	1741
6' Gable	69.803	1773
	71.063	1805
	72.323	1837
	73.583	1869
	74.843	1901
	76.102	1933
	77.362	1965
	78.622	1997
	79.882	2029
	81.142	2061
7' Gable	82.402	2093
	83.661	2125
Regular Units	84.921	2157
	86.181	2189
	87.441	2221
Tall Hanger Units to Floor	88.701	2253
	89.961	2285
	91.220	2317
	92.480	2349
8' Gable	93.740	2381





CALCULATING GABLE, DRAWER & DOOR HEIGHTS

How to Manually Calculate Drawer & Door Heights

Although we provide a Drawer Face/Door Size Calculator on our Sherwood Shelving website, learning how to do this manually is important. It is recommended when calculating these items, that it be done in metric measurements.

647.6mm

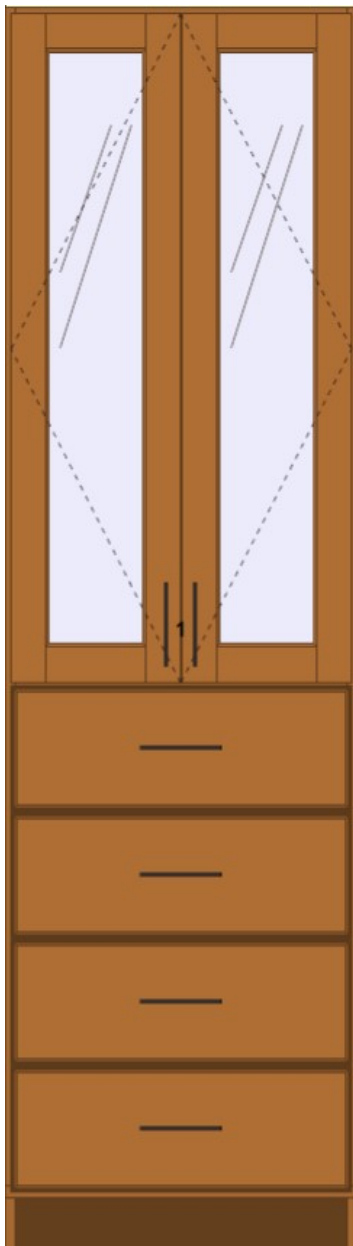
Overall Cabinet Width

11mm
(Overlap)

3mm
(Gap)

11mm
(Overlap)

11mm
(Overlap)



3mm
(Gap)

3mm
(Gap)

3mm
(Gap)

3mm
(Gap)

11mm
(Overlap)

The conversion from imperial to metric & vice versa is:

*** Imperial to Metric: (Imperial) x 25.4 = Metric**

*** Metric to Imperial: (Metric) ÷ 25.4 = Imperial**

The Gable Length Chart and Door Height Chart are important tools that should always be used when calculating the required height for drawers and doors.

The 2 important things to remember are:

***Drawer/Door Overlay = 8mm:** This is the amount the drawer face/door extends over the gable or fixed shelf since the gables/shelving is 19mm (.75") thick an overlay of 8mm will leave 11mm of the gable/shelf visible

***Reveal (gap) = 3mm:** The reveal is the gap between the drawers and doors

A close study of the diagram will show the following:

Overall Gable Height

96+11+221+3+221+3+221+3+221+3+1181+11=2195

Overall Width

11+311.3+3+311.3+11=647.6

2195mm

(Overall Gable Height)

Drawer Face Sizes

XS	125mm
S	157mm
M	221mm
L	317mm

Kick Sizes

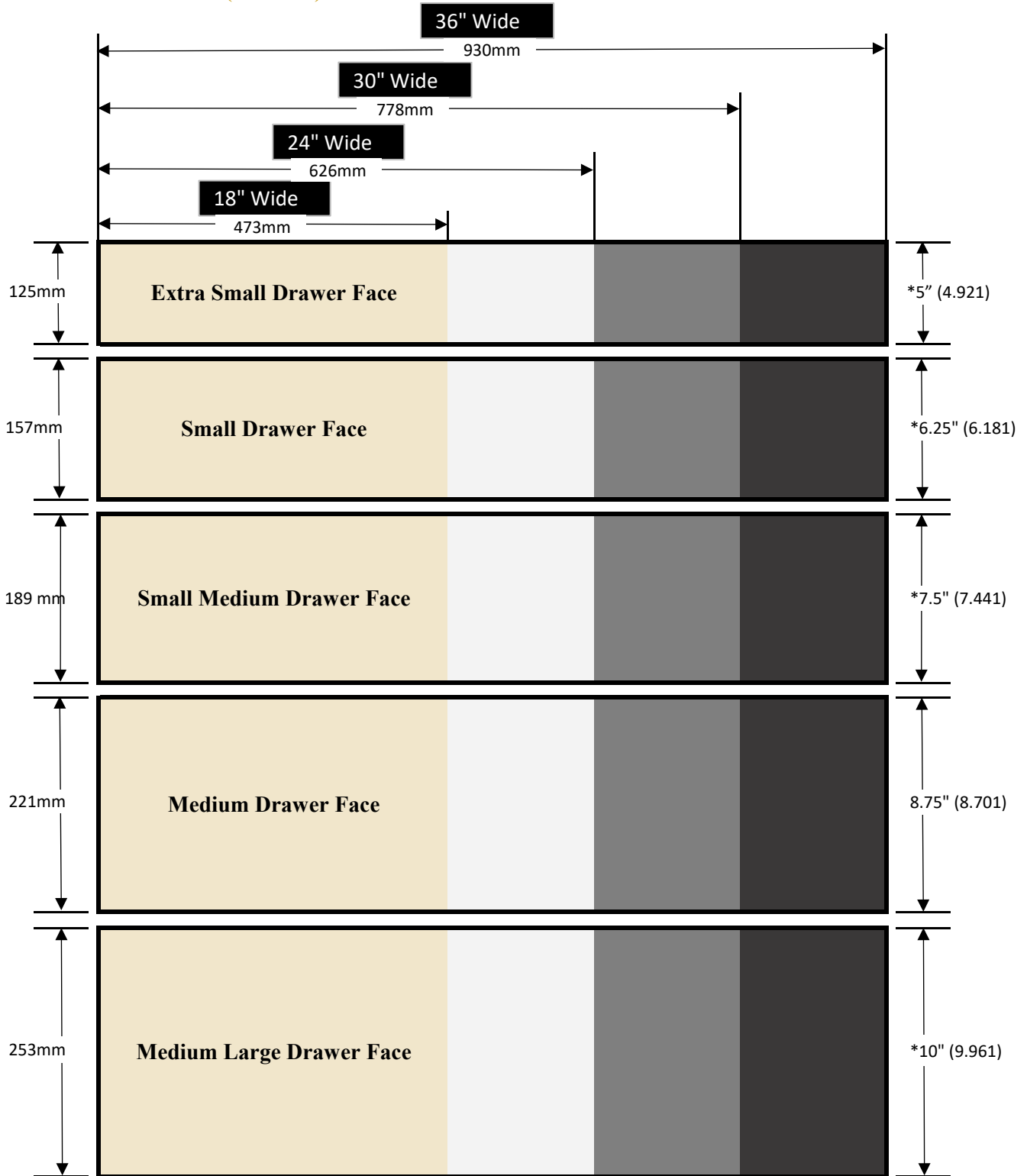
S	64mm
M	96mm
L	160mm



DRAWER FACE DIMENSIONS

*these are rounded numbers

*actual sizes are in (brackets)





DRAWER FACE DIMENSIONS

*these are rounded numbers

*actual sizes are in (brackets)

